

In order to function properly in the newest version of Atlas, users will need to insure you upgrade to a MeadCo ScriptX that is at version 7.4 or above. For Windows 7, we have found that Version 7.5 is the most stable, and for Windows 10 Version 8.0 is best. The steps below will allow you to upgrade your office computer to the correct version.

### You will need to:

1. Identify your operating system.
2. Download the correct version.
3. Complete the installer prompts.

### Identify your operating system

1. Type System in the Search Window.
2. Click on the System Icon.
3. In the Windows Edition Section it will tell you which operating system you are using.

### Download the Correct Version

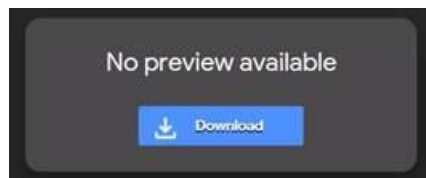
If you are on Windows 7 download Version 7.5 using the link below:

<https://drive.google.com/open?id=1LlZj-CHKC-qr7K2gYJPxUOx1Jzx0K5LA>

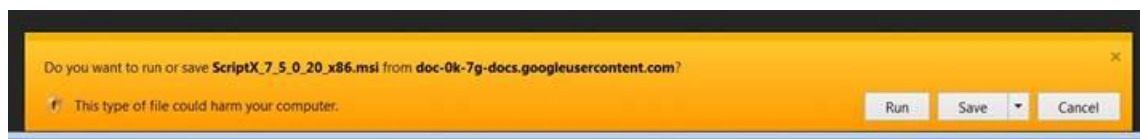
If you are on Windows 10 download Version 8.0 using the link below:

<https://drive.google.com/open?id=1SFp5dxQaDD3dYiZ1Udj-rBx3YSvc67gT>

1. You will be taken to the download page, Click on the Download Button.

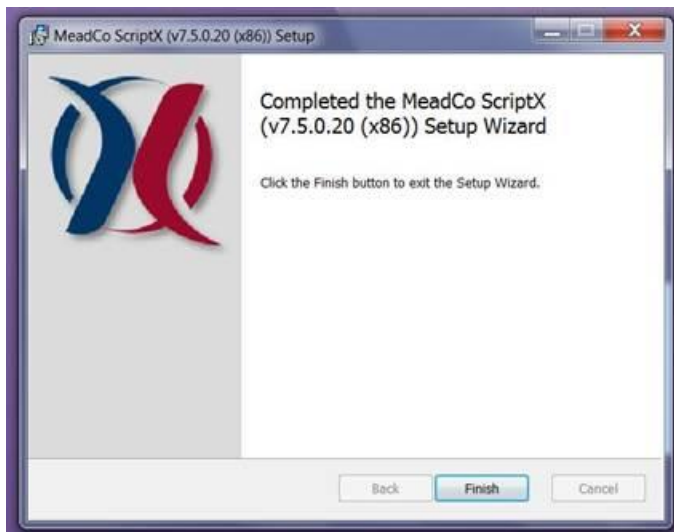
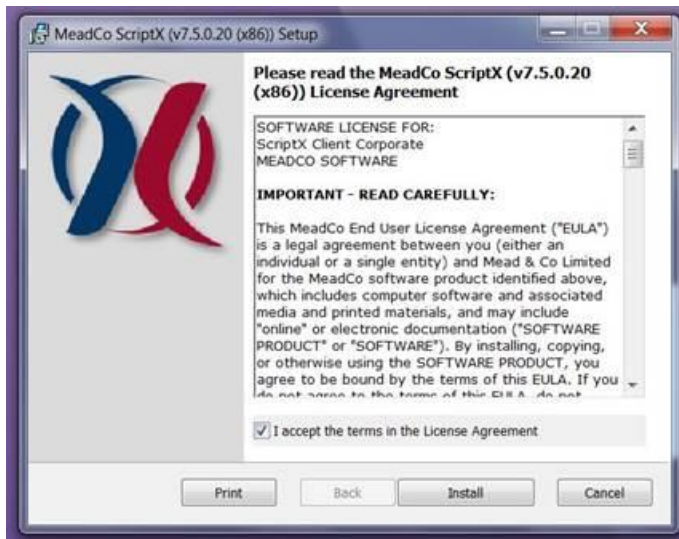


2. When prompted Click on the Run Button.

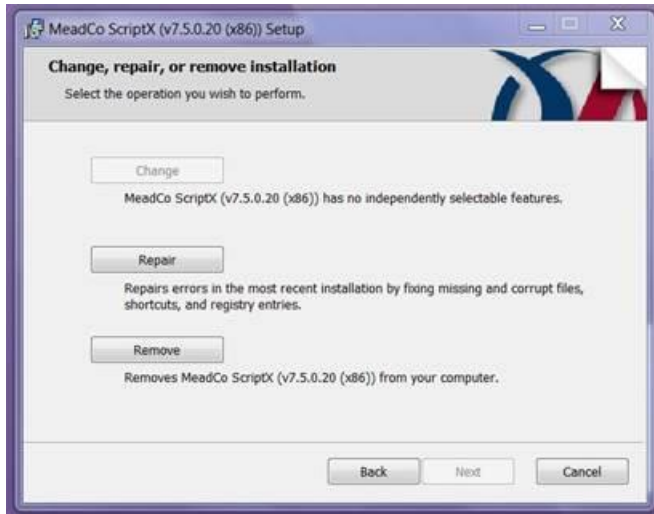


**Complete the installer prompts (these are identical for ver 7.5 and 8.0)**

1. When prompted Check the Accept Licensing Box, Click Install, and click Finish when prompted.



If you have the correct version already installed you will get the message below, Click Cancel and you are finished.



If you have a newer (or Higher) version already installed you will get the message below, Click OK and you are finished.

